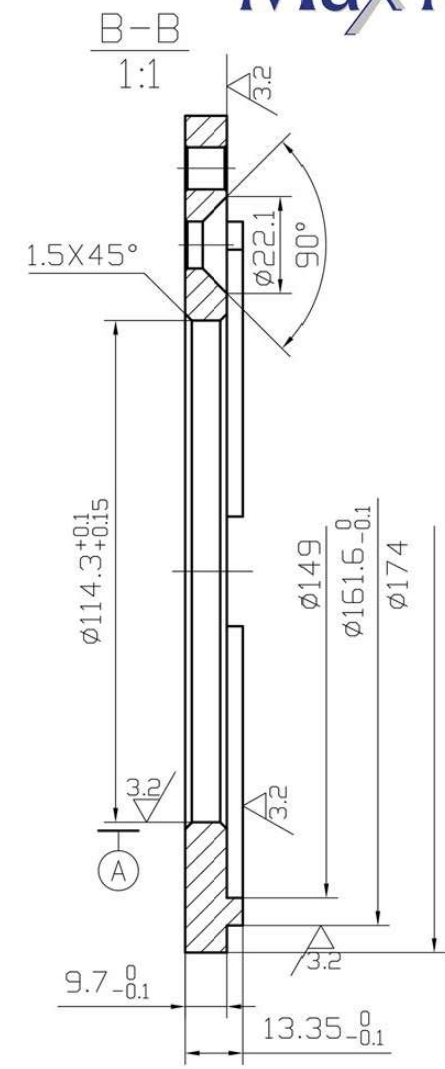
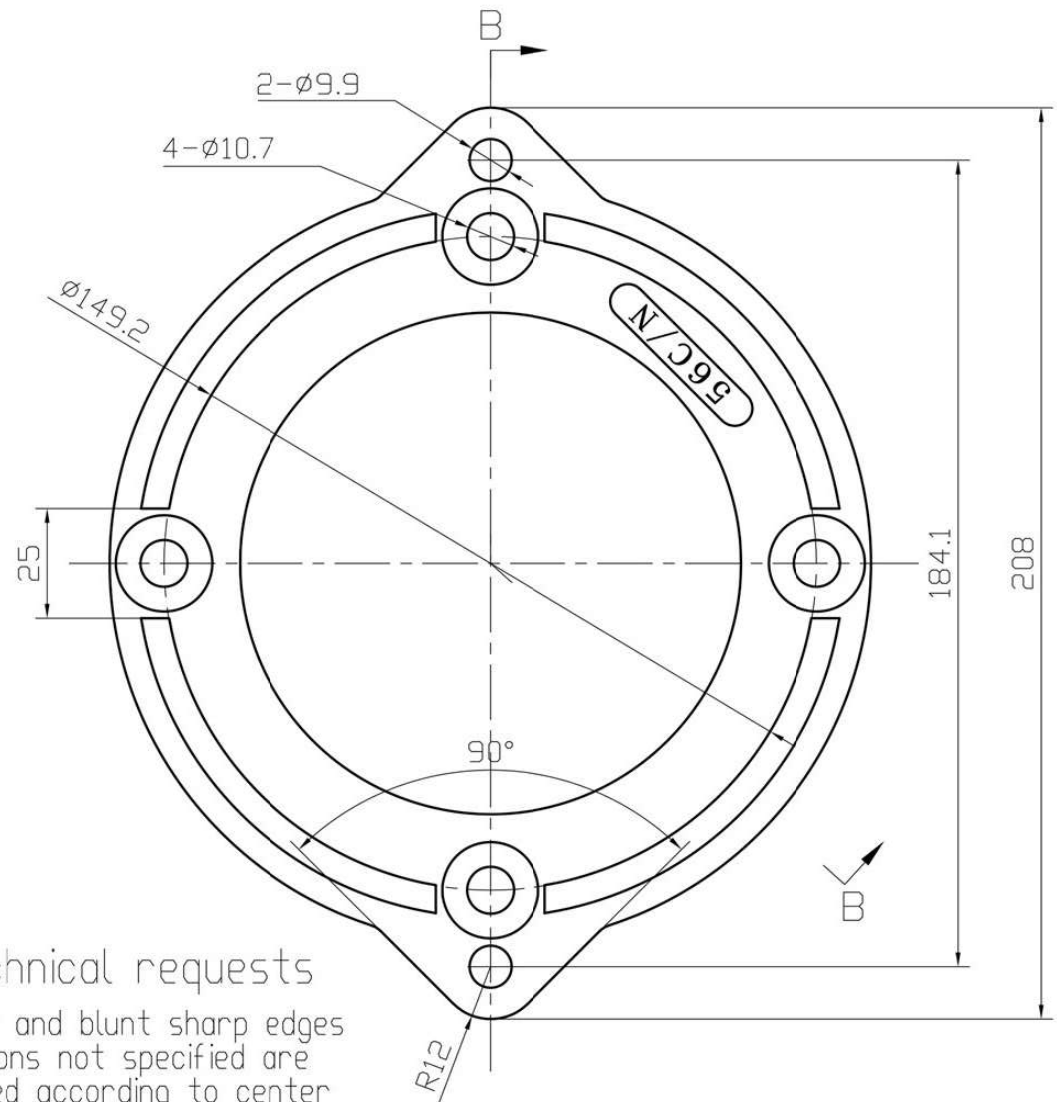


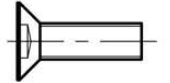
Version:2HUA	Revised: July 2020	HP	RPM	FRAME	ENCLOSURE	MTR-342FDCH
Customer is responsible in determining that MaxMotion product will fit/perform suitably in the intended application		3/4	3600	56C	TEFC	



technical requests
deburr and blunt sharp edges
dimensions not specified are
machined according to center
symmetry

ITEM #:56C/N


5/16-18UNCx1-1/4
With Spring Washer Galvanized
2 PCS


3/8-16UNCx1
Blackening
4 PCS